



Volume 37, 2024

Human Capital Real Insights

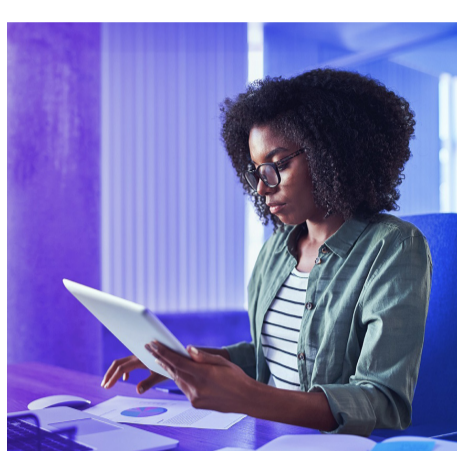
Our latest viewpoints



[Workforce reinvention for success](#)

Unlock the key to a modern, innovative workforce by deconstructing and reconstructing jobs to optimize tasks and roles, shifting managerial focus towards coaching and empowering teams. Learn how to optimize your organization's potential through intelligent workforce deconstruction.

[Download the paper](#)



[Achieve excellence by mastering people analytics strategies](#)

Empower your HR function with data-driven people analytics to uncover employee insights, tackle turnover, and create a great workplace. Download our paper to learn how to become a data-driven organization that effectively manages workforce challenges.

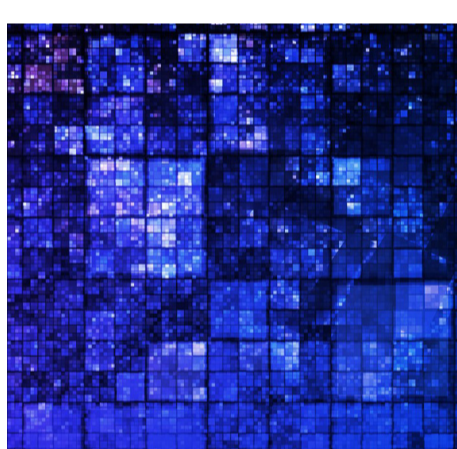
[Download the paper](#)



[Harness GenAI to transform the workforce](#)

Unlock the potential of GenAI in transforming the workforce, boosting efficiency in HR and beyond. Empower your organization to overcome talent readiness obstacles for greater success. Watch our webcast to gain insights into the broader implications and effects of GenAI on the workforce.

[Watch now](#)



[Elevate your global payroll strategy](#)

Tackle key challenges in global payroll through KPMG expert insights, focusing on the value of current state assessments, real-life examples of results, and addressing payroll challenges for globally mobile employees. Tune in to our webcast now and elevate your organization's payroll strategy.

[Watch now](#)

To learn more about a specific topic or suggest ideas for improvements or features you would like to see in this publication, [please email us](#).

Visit our [Human Capital Real Insights web page](#) to explore our latest viewpoints on today's top of mind issues for HR leaders.

[Subscribe](#)

If you believe your colleagues would be interested in receiving this newsletter, please direct them to our [subscription page](#).



[Lisa Massmann](#)

Principal and
Human Capital Advisory Leader
KPMG LLP

Some or all of the services described herein may not be permissible for KPMG audit clients and their affiliates or related entities.



[Privacy](#) | [Legal](#)

You have received this message from KPMG LLP. If you wish to unsubscribe from this publication or from other KPMG communications, please [click here](#). To unsubscribe from all KPMG communications, [click here](#).

KPMG LLP, 3 Chestnut Ridge Road, Montvale, NJ 07645

© 2024 KPMG LLP, a Delaware limited liability partnership and a member firm of the KPMG global organization of independent member firms affiliated with KPMG International Limited, a private English company limited by guarantee. All rights reserved.

The KPMG name and logo are trademarks used under license by the independent member firms of the KPMG global organization.